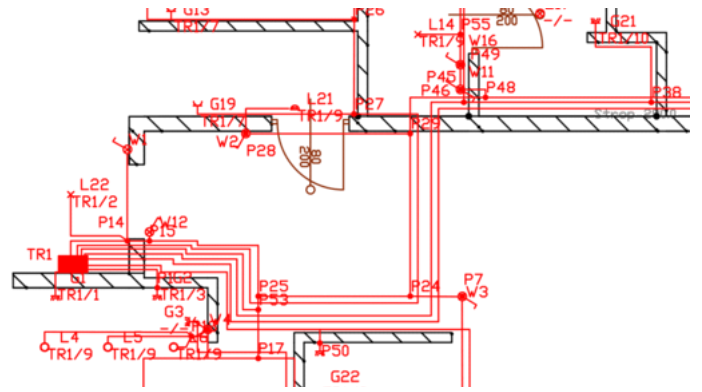
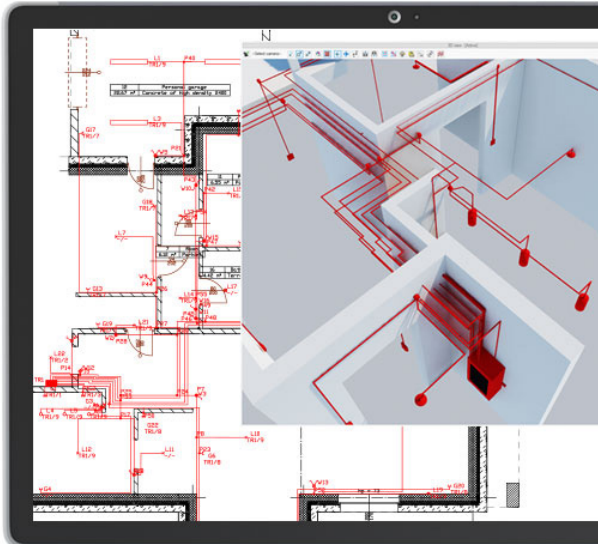


## ArCADia ELECTRICAL INSTALLATION

Draw the installation project in a building in accordance with the BIM technology

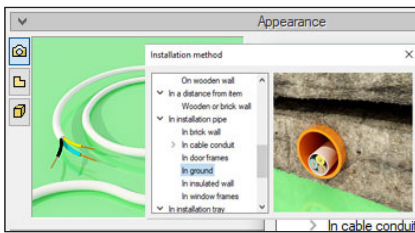


Intended for designers of electrical and power equipment systems in buildings and it can be used to create the professional documentation of internal low-voltage electrical systems.

ArCADia-ELECTRICAL INSTALLATIONS is a module that expands the capabilities of the ArCADia BIM program, which means that part of the options for designing electrical installations is in the basic version of the program:

**ArCADia LT, ArCADia, ArCADia PLUS**

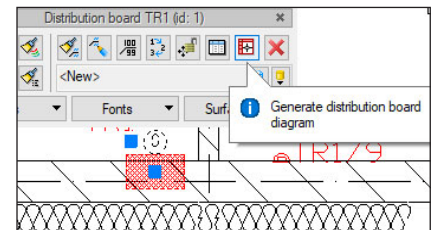
### Advanced features of The ArCADia-ELECTRICAL INSTALLATIONS module:



The calculation of short-circuit currents and short-circuit power on individual sections of the designed installation.

It...	T...	Circuit address	Voltage [V]	Installed po...
1	<input checked="" type="checkbox"/>	TR1/1	230	0.6
2	<input checked="" type="checkbox"/>	TR1/2	230	0.3
3	<input checked="" type="checkbox"/>	TR1/3	230	1.5

Calculations of load currents (1-f or 3-f) and calculation of voltage drops. Generation of a calculation report and power balance in RTF format.

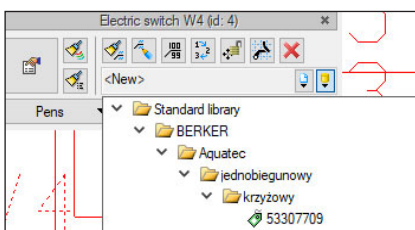


Generating structural schematics of power lines for electrical installations projects (schematic diagram of internal power lines between designed distribution boards).

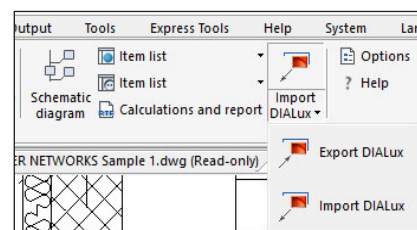
### Why is it worth buying ArCADia-ELECTRICAL INSTALLATION

- One of the few CAD/CAE solutions for electricians allowing to draw the installation project in a building in accordance with the BIM technology.
- Numerous benefits from working in BIM technology: automatic checking of collisions with other building elements, advanced 3D preview, export to IFC format.
- Advanced 3D preview.
- Full support for DWG format.

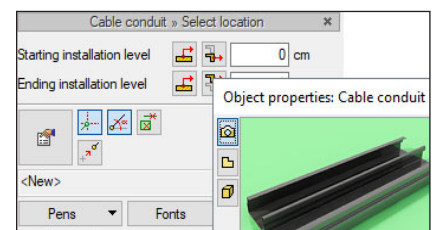
### Try our ArCADia-ELECTRICAL INSTALLATIONS PLUS



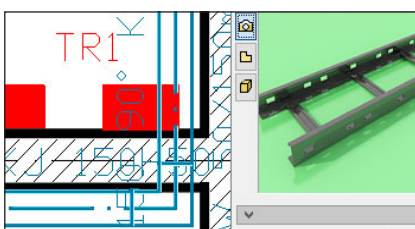
Extensive libraries of elements.



Support for DIALUX software (export and import of lighting fixtures).



Designing cable routes.



Calculations of filling and loading cable routes.

Drawing	Name	Marking
	BERKER modul pojedynczy z uzziemieniem 53 6380 85	G1-G17
	Distribution board recess-mounted protection class I, 35.65/20 cm, 250A, IP 44	TR1 TR.2
	KONTAKT-SIMON a quarius (matynkowe) jednobiegunowy pojedynczy-AQW 1	W1-W17

Generation of bills of materials and elements lists (RTF and CSV export)